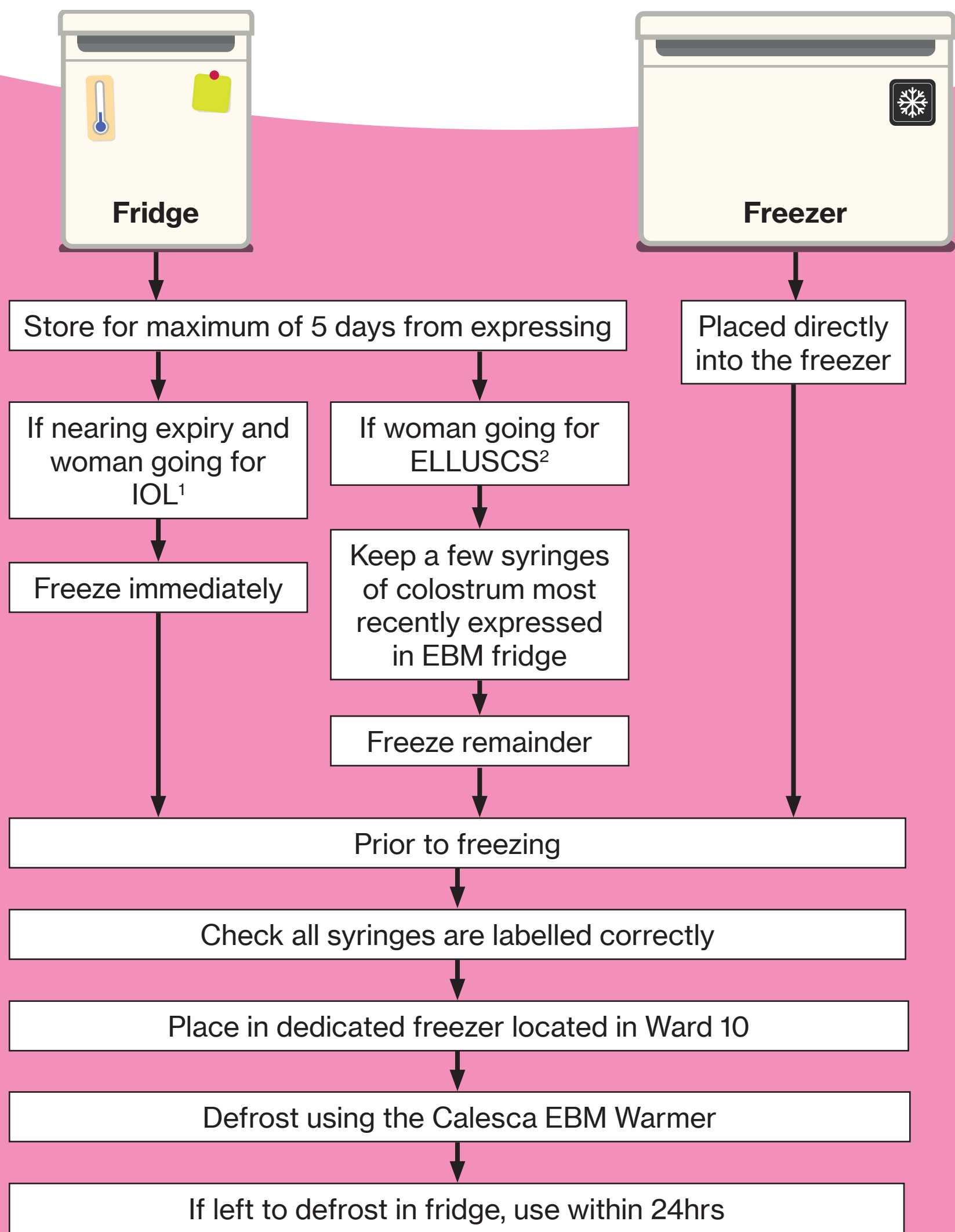


Ante Natal Colostrum

Guidance on management of colostrum on admission to maternity unit

On admission, ask where syringes were stored at home



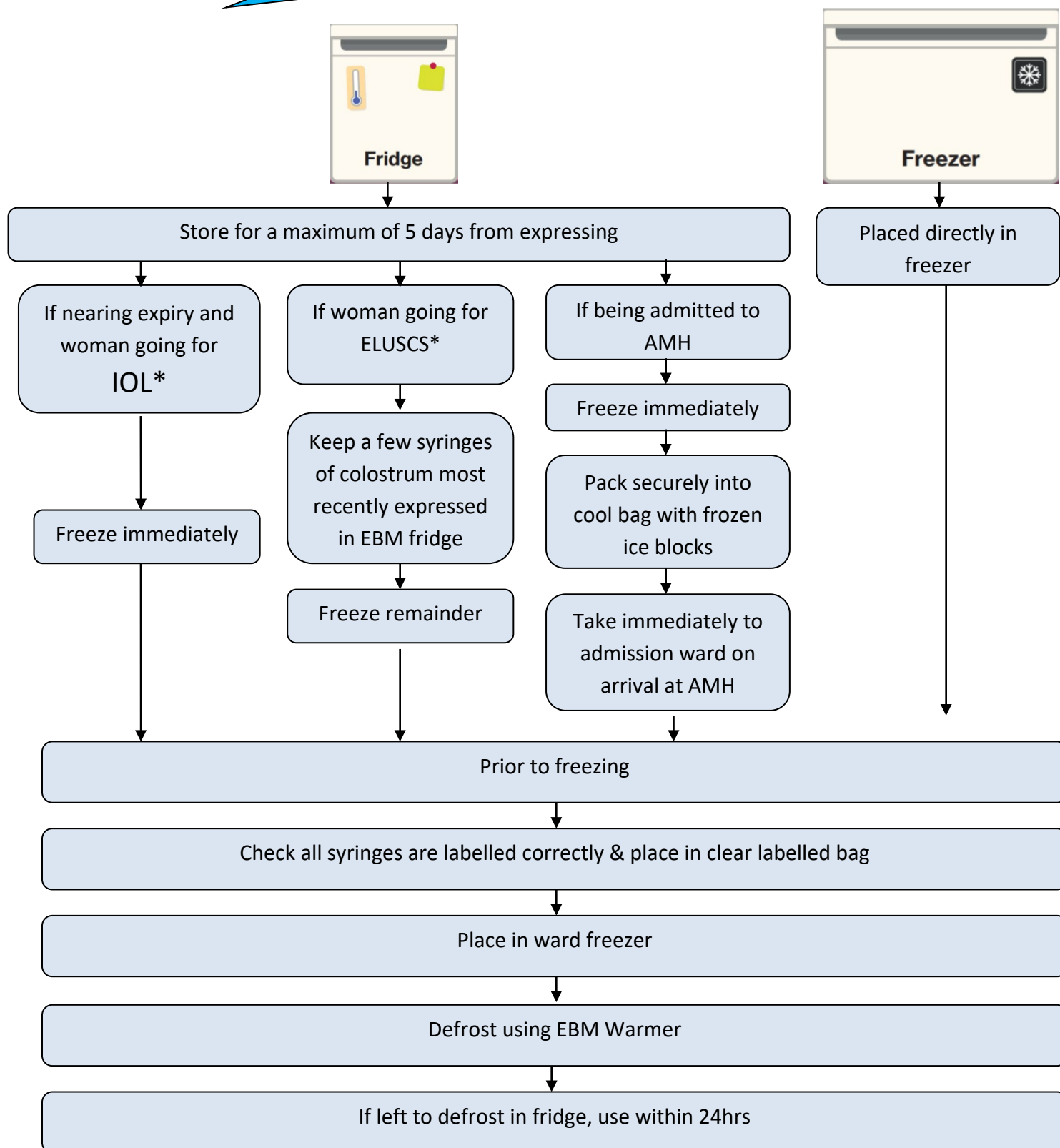
²Elective Lower Uterine Segment Caesarean Section

¹Induction of Labour

Ante Natal Colostrum

Guidance on management of colostrum
on admission to the maternity ward

On admission, ask where syringes were stored at home



*IOL = Induction of labour

*ELUSCS = Elective lower uterine segment caesarean section